



# **SnapTable PRO® for Standing Seam Metal Roofing**

Metal panel preparation  
system that will save you  
time and money.

# OUR COMPANY

*OPPORTUNITIES DON'T  
JUST HAPPEN.  
WE CREATE THEM.*



## OUR HISTORY

In 1959, Swenson Shear was founded by Ralph Swenson and his father in Ceres, CA. The company started out with just one basic shear. In the 1970s, Art Doerksen purchased the business and expanded the product line. A decade later, current owner Dean Doerksen, invested into Swenson Shear and became a partner in the business.

In the early 1990s, Dean became the sole owner of Swenson Shear and made big changes to its product offering. Popularity of its products quickly grew, tools for stone coated materials were developed and all shears were upgraded to feature interchangeable blade sets. Swenson Shear purchased the rights to the Swift Cut and Design concept, further developing it to create its line of standing seam tools.

In 2018, Morgan Aue became the President of Swenson Shear. Focused on improving contractors' efficiency and quality, Swenson Shear is continuously innovating and improving its selection of tools. Since its humble beginnings, Swenson Shear has grown significantly, serving customers internationally with its many tools and products for commercial and residential roofing systems.

## OUR BELIEF

The team at Swenson Shear is committed to providing the best solutions with the best service at the best price. Our focus is to remain champions of the contractor community and their need to be profitable and efficient. That commitment is demonstrated every day by producing cost-effective tools that make each job more lucrative and the jobsite more rewarding.



## OUR PRODUCTS

Swenson Shear tools are designed and manufactured in the U.S.A. Each machine we produce is crafted to address challenges contractors and metal manufacturers encounter and serve as a proven solution to increase productivity, maintain consistent quality workmanship and contribute to improving the bottom line of our customers.

Each Swenson Shear product is made with the intention to provide an immediate return on the investment made by our customers. Our products are designed to assist our customers in addressing the growing shortage of skilled labor while saving money.



## OUR VISION

By keeping our product line specific to **roofing installation solutions**, the team at Swenson Shear is able to concentrate on creating tools that are high-quality and built to last. Investing in one of our products will result in your installers providing consistent, quality results because of uniform methods of preparation. We remain steadfast in our commitment to providing cost-effective and durable solutions for roofing installers.

# OUR PRODUCT

## FEATURES OF THE **SNAPTABLE PRO**

- ◆ Meant for standing-seam and snap-lock metal roof panels
- ◆ Compatible with any manufacturers' panels or panel roll forming machine
- ◆ Provides consistent notches, cuts and hems at your eaves, hips and valleys
- ◆ Produces factory-like cuts
- ◆ Allow operator to create tab to close rib of metal panel
- ◆ Does not require electricity
- ◆ Minimizes material waste
- ◆ Additional dies available to accommodate multiple profiles
- ◆ Transportable
- ◆ Adjustable jacks for leveling







## COMPLETE FULL PANEL PREPARATION **IN SECONDS!**

The SnapTable PRO is an all-in-one metal panel preparation system designed to deliver a consistent quality, standing-seam roof in less time and for less money. The system is made up of three key components:



### **STANDING SEAM NOTCHER**

Notch through the standing seam ribs and receive factory like cuts, eliminating burred edges and flying metal. This station features a ruler degree indicator and easily adjusts to accommodate angles. Easy to use and is the first step to receiving perfectly prepped panels.

The machine can be adjusted to accommodate panels from 12"-24" in width and includes panel guide rollers to guide the panel through the machine



### **PANEL CUTTER**

Effortlessly cut your panel with a straight edge blade designed to seal the panel as it cuts. The panel cutter features a dual edge blade for double the cutting life. This station features a cutter maximum length of 60 inches.



### **EAVE & VALLEY HEMMER**

You can now count on delivering uniform or identical panels. The Eave & Valley Hemmer provides perfect lines on your valleys consistently. This tool has a rotating table top and adjustable teeth to always provide an even amount of pressure to your hems.

# OUR PRODUCT

*DELIVERS VALUE AND PERFORMANCE.*

## GIVE YOURSELF A COMPETITIVE EDGE



Investing in a SnapTable PRO  
can **REDUCE**  
labor costs, material waste and time by  
**35% ANNUALLY.**

That's added profit to the bottom line!

---

## Realize an IMMEDIATE ROI with the SnapTable PRO.

It pays for itself after just  
**100 straight cuts**  
or  
**70 cuts for hips and valleys.**

**TAKE ADVANTAGE OF IRS SECTION 179  
AND DEDUCT THE TOTAL COST  
OF YOUR MACHINE  
THE SAME YEAR YOU PURCHASE!**

Contact a tax expert to learn how.



**Return on investment**



## SNAPTABLE PRO SPECIFICATIONS

Panel Width Sizes:	12 inches – 24 inches
Notching Offset:	29 inches
Cutter Maximum Angle:	60 inches
Hemmer Maximum Angle:	60 inches
Purpose:	All-in-one panel/roofing tool. It notches, cuts, and hems panels.
Recommended Panel Thickness:	Up to 20 gauge
Most Commonly Used With:	Cor-Ten Nail Strip SnapLock Mechanical Seam Zip-Rib



# OUR PERFORMANCE

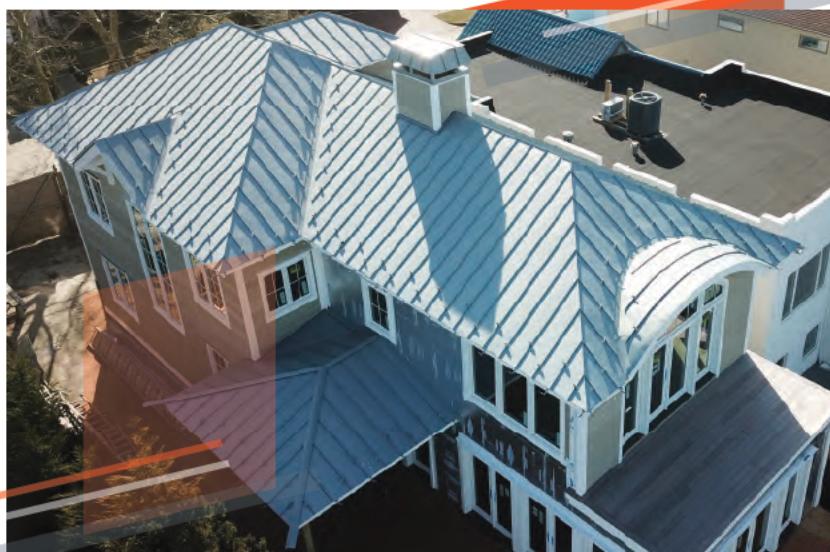
HEAR FROM OUR CUSTOMERS.



**Prime Roofing**  
**Panel Profile: 1.5" Mechanical**  
**Job Site Location: TEXAS, USA**  
**Job Size: 9,800 square feet**

"On a recent 9,800 sq ft job we completed, we covered more than half the cost of our SnapTable PRO with labor savings alone. Bottom line is that purchasing a SnapTable PRO will allow your company to perform higher quality work faster than you ever thought possible. It is a must-have for any contractor serious about installing high quality metal roofing. The SnapTable PRO will give you the edge you need to separate yourself from the pack."

**Mark Young, President of Prime Roofing**



**LongIslandCopper.Com**  
**Panel Profile: 1" Mechanical Lock**  
**Job Site Location: NEW YORK, USA**  
**Job Size: 400 square feet**

"I love the SnapTable PRO - it's awesome. If this is what you do, it will save you a lot of time and money. On this job alone I saved about a weeks' worth of time. Swenson Shear stands behind their products. You get what you pay for. The notcher alone saves you a ton of time because it's such a clean cut."

**Jimmy Ferrara, Owner of Long Island Copper.com**



**Beartooth Metal Roofing**  
**Panel Profile: New Tech Machinery, 1" Nail Strip**  
**Job Site Location: MONTANA, USA**  
**Job Size: 520 square feet**

"The SnapTable PRO increased our valley production three-fold. It was nice to have a machine that could produce perfect valley bends longer than your average hand tool. My SnapTable PRO has allowed me to prep high-quality panels at a much quicker rate. I've had my machine for several years now, and I wouldn't go to a job site without it!"

**Zack Kilwein, Owner of Beartooth Metal Roofing**



**Rio Roofing**  
**Panel Profile: McElroy Metal 138T**  
**Job Site Location: LOUISIANA, USA**  
**Job Size: 233,335 square feet**

"We purchased a SnapTable PRO from Swenson Shear to cut panels we installed in the valleys and to notch the panels. We easily got our money's worth out of that thing on this job alone."

**Hedley Hichens, Vice President of Rio Roofing**



# OUR PERFORMANCE

HEAR FROM OUR CUSTOMERS.



**Artisan Metal Roofing**  
**Panel Profile: Vic West, Prestige**  
**Job Site Location: ONTARIO, CANADA**  
**Job Size: 9,000 square feet**

“Primarily, the SnapTable PRO made a huge difference in the valleys and hips. This tool helped create the seamless line up the valley and made each panel identical. It would be a lot harder by hand and it saved a lot of time, energy and money. The SnapTable PRO paid for itself in just one job.”

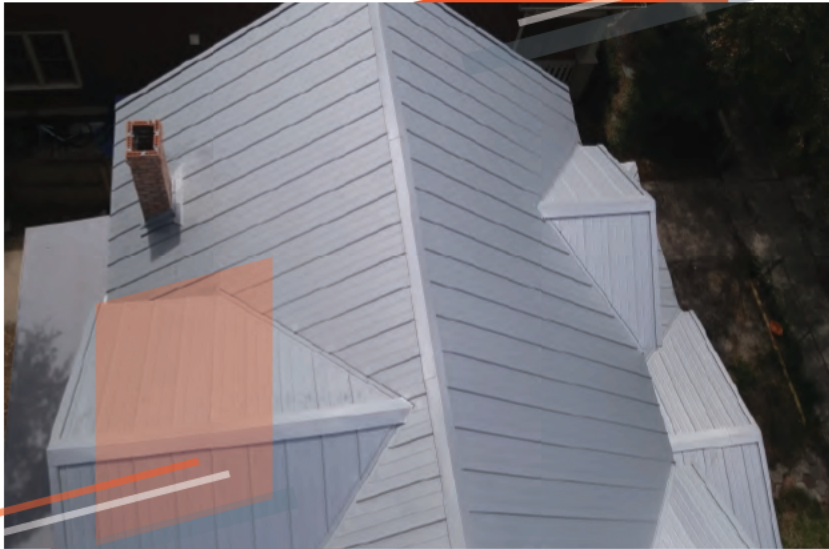
**Justin Simmons, Owner of Artisan Metal Roofing**



**Bill Jackson Roofing Inc.**  
**Panel Profile: Schlebach, 1.5" Snap Lock**  
**Job Site Location: OHIO, USA**  
**Job Size: 510 square feet**

“The SnapTable PRO is a real game changer. It’s well built and makes preparing metal panels much quicker. I saved at least 30% in labor costs. The SnapTable PRO helped me produce cleaner cuts and much cleaner roof when it was all said and done.”

**Bill Jackson, Owner of Bill Jackson Roofing Inc.**



**Jax Roofing LLC**  
**Panel Profile: Jax Roofing LLC, 1" Snap lock**  
**Job Site Location: FLORIDA, USA**  
**Job Size: 1,100 square feet**

"The SnapTable PRO is a great piece of equipment to facilitate having straight, good looking hips and valleys. It really increased the quality of the work and it saved me a lot of time. I am very impressed at how great the machine worked. If you care about quality, this is a heavy duty machine that will make the roofing process easier."

**Jaime Cardona, Owner of Jax Roofing LLC**



**Pruden Roofing**  
**Panel Profile: Drexel Metals, 1.5" Snap Lock**  
**Job Site Location: CALIFORNIA, USA**  
**Job Size: 20,000 square feet**

"Initially, it took me and three guys over four hours to install panels on one valley. Once we got the SnapTable PRO, it took us an hour, so it saved us A LOT of time. It cut panels, hemmed them and notched them for us. I think it's safe to say it paid for itself with this one job."

**Richard Pruden, Owner of Pruden Roofing**

**Call TODAY to order your SnapTable PRO!**  
**(877) 588-8748**

**Contact  
Us**



4257 E Keyes Rd  
Ceres, CA 95307



[sales@swensonshear.com](mailto:sales@swensonshear.com)



(877) 588-8748



[www.swensonshear.com](http://www.swensonshear.com)

